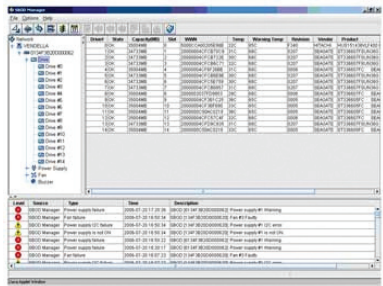


iQstor SAN Manager

iQstor SAN Manager (SANM)

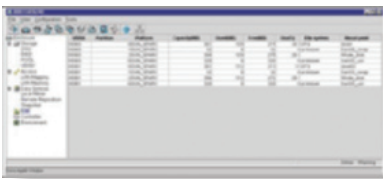
iQstor SAN Manager simplifies SAN management and troubleshooting. It automatically discovers, monitors and manages all the SAN components deployed throughout the enterprise. It also provides the user with a graphical view of the SAN topology and all the interconnects through comprehensive and automatic SAN device discovery, simplifying SAN administration and reducing management costs. The iQstor SAN manager also monitors in real-time the health and performance of all SAN attached components.



iQstor SBOD Manager

iQstor SBOD Manager (SBOD)

With iQstor's SBOD Manager, IT administrators can avoid the complexity that has been associated with configuration and management of expansion enclosures in a direct attached storage (DAS) environment. iQstor's SBOD Manager is a wizard-based, policy-driven tool that dynamically configures, manages and monitors the J2880 SBOD with minimal IT resources, delivering a cost-effective solution that maximizes end-user storage investments.

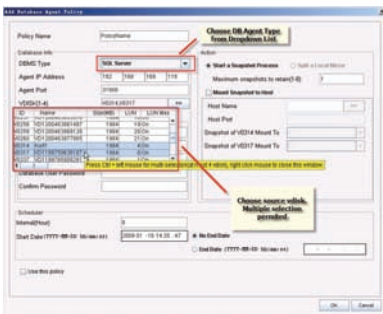


Dynamic Capacity Provisioning

Dynamic Capacity Provisioning (DCP)

In today's data center environments, the storage system's ability to automatically expand the virtual disk space to accommodate file system growth is one of the key IT requirements for continuous data center operation. To achieve the goals of 24x7 system uptime and storage availability, iQstor's Dynamic Capacity Provisioning (DCP) allows continuous monitoring of storage consumption to easily prevent the system from running out of storage space.

DCP allows the data center administrator to automate file system and disk partition processes, setting thresholds and policies to provision capacity from one or more storage pools without server interruption. This intelligent process eliminates costly downtime associated with traditional physical disk upgrades and with re-building and re-formatting operating system partitions that are due to unforeseen changes in storage requirements, bringing workflow efficiencies with lower TCO and higher ROI.



Database Application Agents

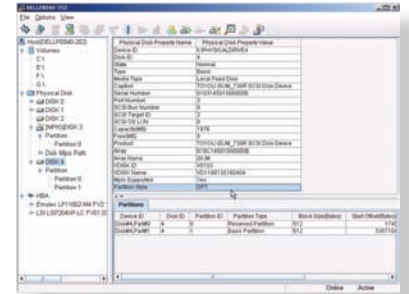
Database Application Agents (DAA)

By using iQstor's DAA, companies can be assured that their active databases are fully protected and transactional integrity is maintained while iQstor's MSS takes a point-in-time snapshot. The combination of DAA and MSS provides the flexibility and reliability IT administrators demand in order to ensure transactional integrity of their databases across multiple storage volumes.

With iQstor's DAA, application databases such as Oracle, SQL and Exchange, can automatically be paused allowing MSS to instantly take simultaneous "group snapshots" of all active data volumes. Once the snapshots are taken, the databases resume normal operation. These snapshots then can be used to copy the data to tape without having to wait to backup the databases at "off-peak" hours.

Multipath Agent (MPA)

iQstor MPA includes a product license and a Microsoft Windows™ 2003 certified DSM (Device Specific Module). The agent provides multipathing in qualified Windows environments. iQstor's MPA provide users with high storage availability in the event that one or more of a storage network components fails. MPA uses redundant physical path components such as host adapters, cables and switches to create multiple paths between the server and iQstor storage. If any of these components or connection paths fails, the multipathing agent will automatically use an alternate path so that the applications can continue to access the data without any interruption.



Multipath Agent

VSS Provider

iQstor's VSS Provider fully supports Microsoft's VSS framework allowing iQstor's MSS to create consistent point-in-time snapshot copies of your critical application data. iQstor's VSS Provider is also used for backing-up and recovery of your Microsoft compatible applications such as Microsoft Exchange, and Microsoft SQL Server.

Network Configuration Utility

iQstor's Network Configuration Utility automatically discovers and assigns IP addresses for each of the two controllers in an iQstor storage system. The Network Configuration Utility broadcasts a discovery command throughout the subnet and receives a response back from every iQstor storage system on the same subnet with their current settings. The user can then change some of these settings to configure the storage system within their network.



Network Configuration Utility



2001 Corporate Center Drive, Newbury Park, CA, USA 91320

Tel: (805) 376-1010 | Fax (805) 376-1011

www.iqstor.com

iQstor is a registered trademark of iQstor Networks, Inc.